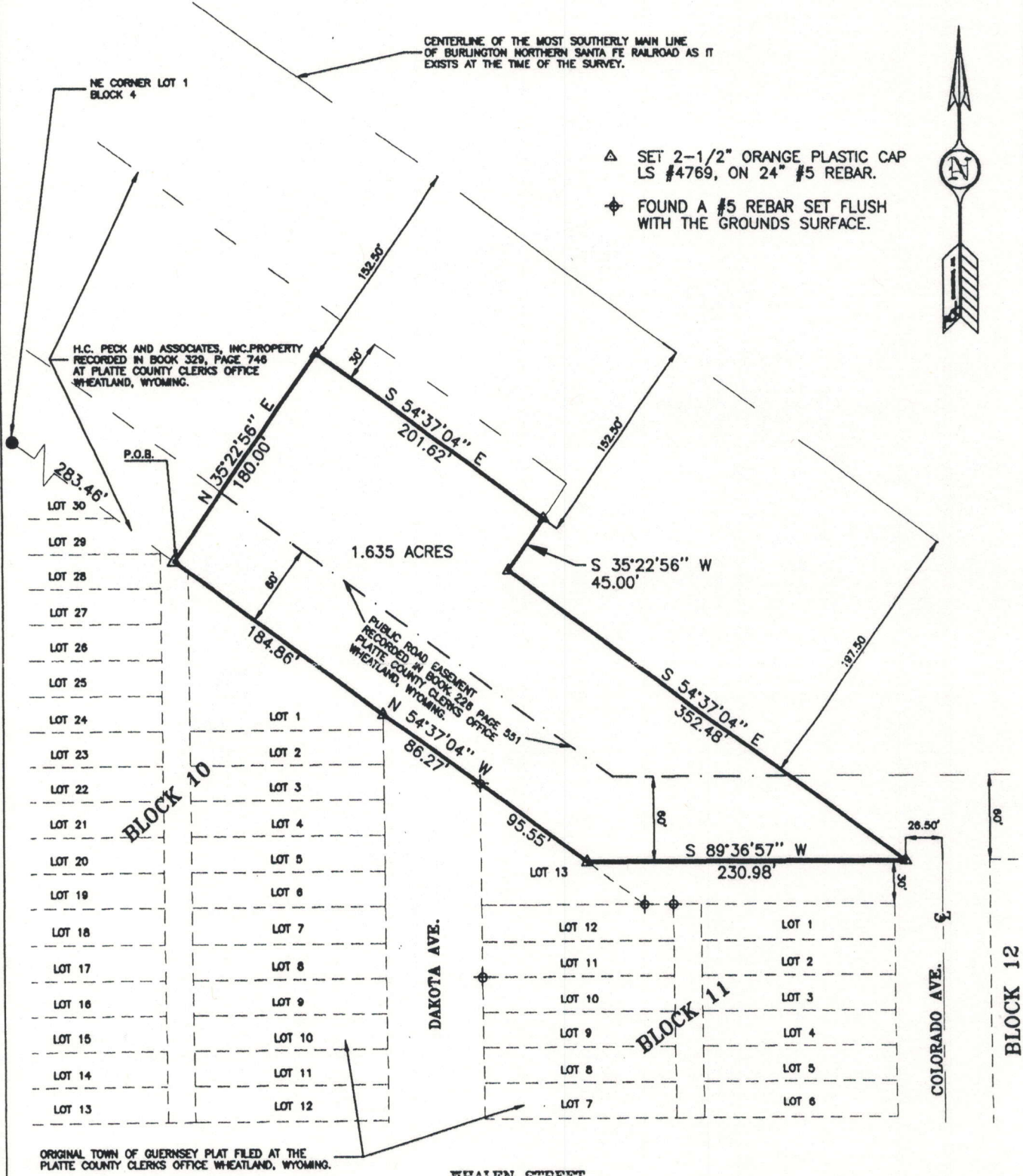


4506 Wigwam Blvd.  
P.O. Box 2185  
Gillette, Wyo. 82716  
Ph. (307) 687-0800

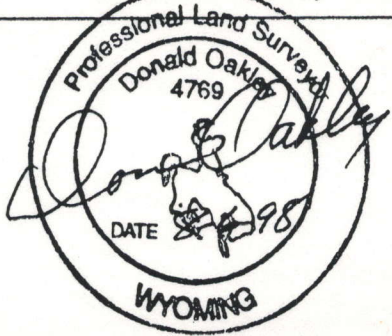
### LEGAL DESCRIPTION EXHIBIT "A"



ORIGINAL TOWN OF GUERNSEY PLAT FILED AT THE  
PLATTE COUNTY CLERKS OFFICE WHEATLAND, WYOMING.

#### SURVEYORS CERTIFICATE

I, Don Oakley, a Professional Land Surveyor registered in the State of Wyoming,  
hereby declare that this drawing was made from notes taken during an actual survey made by  
me or under my direct supervision by Cevin C. Imus during the month of JULY 1998,  
and that said survey is accurately represented on this map.



LOCATED IN A PORTION OF THE  
SW 1/4 OF THE NE 1/4 AND THE  
NW 1/4 OF THE SE 1/4 OF SECTION 35,  
TOWNSHIP 27 NORTH, RANGE 66 WEST  
OF THE SIXTH PRINCIPAL MERIDIAN,  
PLATTE COUNTY, WYOMING

FOR:  
**TRANSYSTEMS CORPORATION**  
7800 EAST UNION AVENUE, SUITE 500  
DENVER, COLORADO 80237  
(303) 740-8900

Project No. 982496.10  
Scale: NOT TO SCALE  
Drawn By: CEVIN C. IMUS  
Date: AUGUST 5, 1998